



U3 SET MANUAL
MICROPHONE
WIRELESS SYSTEM



CAUTION
RISK OF ELECTRIC SHOCK
DO NOT OPEN



WARNING : TO REDUCE THE RISK OF FIRE OR ELECTRIC SHOCK: DO NOT REMOVE SCREWS.
NO USER-SERVICEABLE PARTS INSIDE.
REFER SERVICING TO QUALIFIED SERVICE PERSONNEL.

WARNING : TO REDUCE THE RISK OF FIRE OR ELECTRIC SHOCK, DO NOT EXPOSE THE APPLIANCE TO RAIN OR MOISTURE.

CERTIFICATION



Radio Approvals: FCC Part 15.249, FCC Part 15 B, RSS-210 (Canada), EN 300 440 (Europe), EN 301.489 (Europe), MIC Notice No.88 Appendix No.43(Japan)

This Class B digital apparatus complies with Canadian ICES-003.

IC Caution: RSS-Gen Issue 4 December 2014" & "CNR-Gen 4e Décembre 2014:

This device complies with Industry Canada licence-exempt RSS standard(s). Operation is subject to the following two conditions:

- (1) This device may not cause interference, and
- (2) This device must accept any interference, including interference that may cause undesired operation of the device.

Le présent appareil est conforme aux CNR d'Industrie Canada applicables aux appareils radio exempts de licence. L'exploitation est autorisée aux deux conditions suivantes:

- (1) l'appareil ne doit pas produire de brouillage, et
- (2) l'utilisateur de l'appareil doit accepter tout brouillage radioélectrique subi, même si le brouillage est susceptible d'en compromettre le fonctionnement.

FCC CERTIFICATION

THIS DEVICE COMPLIES WITH PART 15 OF THE FCC RULES. OPERATION IS SUBJECT TO THE FOLLOWING TWO CONDITIONS:

- (1) THIS DEVICE MAY NOT CAUSE HARMFUL INTERFERENCE, AND
- (2) THIS DEVICE MUST ACCEPT ANY INTERFERENCE RECEIVED, INCLUDING INTERFERENCE THAT MAY CAUSE UNDESIRE OPERATION.

WARNING:

Changes or modifications not expressly approved in writing by Xvive may void the users authority to operate this equipment.

RF EXPOSURE STATEMENT:

This transmitter must not be co-located or operated in conjunction with any other antenna or transmitter.

NOTE:

This equipment has been tested and found to comply with the limits for a Class B digital device, pursuant to part 15 of the

FCC Rules. These limits are designed to provide reasonable protection against harmful interference in a residential installation. This equipment generates, uses and can radiate radio frequency energy and, if not installed and used in accordance with the instructions, may cause harmful interference to radio communications. There is no guarantee that interference will not occur in a particular installation. If this equipment does cause harmful interference to radio or television reception, which can be determined by turning the equipment off and on, the user is encouraged to try to correct the interference by one or more of the following

MEASURES:

- Reorient or relocate the receiving antenna.
- Increase the separation between the equipment and receiver.
- Connect the equipment into an outlet on a circuit different from that to which the receiver is connected.
- Consult the dealer or an experienced radio/TV technician for help.

**IMPORTANT SAFETY INSTRUCTIONS
PLEASE READ THESE INSTRUCTIONS
IN A SAFE PLACE**



**WARNING: BEFORE USING YOUR XVIVE U3 MICROPHONE WIRELESS SYSTEM,
CAREFULLY READ THE OPERATING INSTRUCTIONS.**

1. Observe all instructions carefully in the U3 manual.
2. Do not to perform service operations beyond those described in the U3 manual. Services required when the apparatus has been damaged in any way, such as:
 - Liquid has been spilled or objects have fallen into the apparatus
 - The unit has been exposed to rain or moisture
 - The unit does not operate normally or changes in performance in a significant way
 - The unit is dropped or the enclosure is damaged
3. Do not place near heat sources, such as radiators, heat registers, or appliances which produce heat.
4. Guard against objects or liquids entering the device.
Do not use or place unit near water.
5. Clean only with a dry cloth.
6. Only use attachments/accessories specified by the manufacturer.
7. Prolonged listening at high volume levels may cause irreparable hearing loss and/or damage. Always be sure to practice "safe listening."

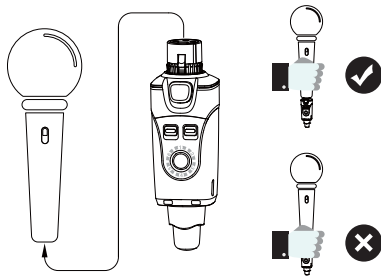
U3 SET PRODUCT INTRODUCTION

- 2.4Ghz band is optimal for dynamic microphone wireless system, Approved for use in worldwide.
- Less than 5ms Latency, Simultaneous broadcasts on 6 channels.
- Broad 20Hz – 20KHz frequency response
- Up to 90 feet (actual range depends on RF signal absorption, reflection and interference)
- 5 Hours of battery life (rechargeable battery for both Transmitter & Receiver)
- Works with XLR dynamic microphone and battery-powered condenser microphones.
- Mic mode for microphone and Line mode for other Gear output
- High Resolution 24-bit/48kpbs Audio
- Dynamic Range 110dB
- Signal to Noise Ratio is 110dB
- U3 wireless aims to take the complexity and frustration, out of traditional wireless microphone systems. Creating a flexible, all-in-one solution that makes any your favorite dynamic microphones into wireless.
- Wireless audio system for active loudspeakers.

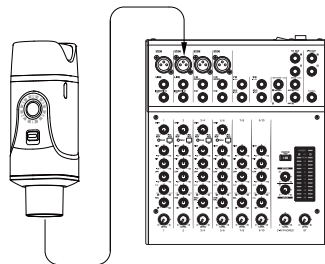
PACKAGE DETAILS

| | |
|----------------------|------|
| U3 Transmitter | 1PCS |
| U3 Receiver | 1PCS |
| USB Cable | 1PCS |
| Manual | 1PCS |
| Bag | 1PCS |

QUICK START

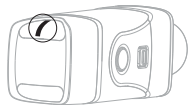
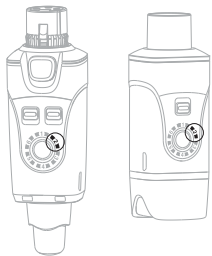


1. Plug the Transmitter into the XLR dynamic microphone and battery-powered condenser microphones.



2. Plug the Receiver into the Mixer.

QUICK START

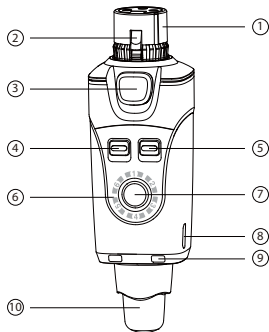


3. Turn on the Transmitter and the receiver and check the Channel.

4. After connecting successfully, the LED lights on receiver will stay on.

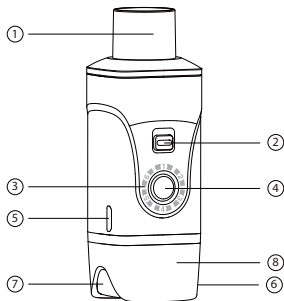
5. Check the connection by talking through the microphone.

BASIC OPERATION U3 TRANSMITTER



- ① Mic In: XLR microphone input jack
- ② Spring: Circumferential ground spring providing an accurate connection to the mating shell
- ③ Mic Lock: secures transmitter to the microphone
- ④ Input level switch: MIC = 0dB input
LINE = -10dB input
- ⑤ Power switch: switches unit on/off
- ⑥ Channel status LED: indicates selected channel
- ⑦ Channel switch: selects Channels 1-6
- ⑧ USB charging port
- ⑨ Power status LED: indicates power status:
Led off = 100% ~ 30%
Solid red = 29% ~ 11%
Flickering red = less than 10%
- ⑩ Antenna.

BASIC OPERATION U3 RECEIVER



- ① XLR OUT: XLR microphone input jack
- ② Power switch: switches the unit on and off
- ③ Channel status LED: indicates selected channel
- ④ Channel switch: selects Channels 1-6
- ⑤ USB Port: For charging the battery
- ⑥ RF Status LED:
 - ON = Transmitter is on and link is established
 - Flashing = Signal connection interference
 - OFF = Transmitter off or unlinked
- ⑦ Power status Led: indicates power status.
 - Led off = 100% ~ 30%
 - Solid red = 29% ~ 11%
 - Flickering red = less than 10%
- ⑧ Antenna.

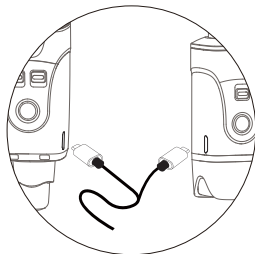
SPECIFICATIONS

U3 MICROPHONE WIRELESS SYSTEM

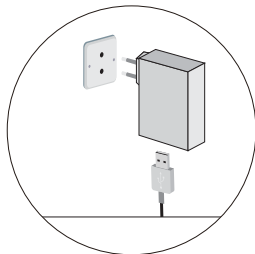
| | |
|-----------------------------|--|
| Tuning Bandwidth | 2400 – 2483.5MHz |
| Working Range | Up to 90ft. Actual Range Depends On Rf Signal Absorption, Reflection And Interference. |
| Audio Frequency Response | 20Hz – 20KHz(-3dB). Dependent On Microphone Type Or Input Signal. |
| Dynamic Range | 110dB |
| Battery Life | Up To 5 Hours |
| RF Sensitivity | -88dBm |
| Total Harmonic distortion | 0.2% |
| RF Output Power | 10 mW E.I.R.P. max |
| Operating Temperature Range | -18°C to 57°C. Battery Characteristics May Limit This Range. |
| Channel Count | Up To 6 Channels |

| | U3 TRANSMITTER | U3 RECEIVER |
|-------------------------|--|---------------------------------------|
| Dimensions | 31 X 29 X 98 mm | 31 X 29 X 98 mm |
| Weight | 93g | 92g |
| Housing | Molded Plastic And Cast Metal | Molded Plastic And Cast Metal |
| Battery | 3.7V Rechargeable Li-Ion, 860mA | 3.7V Rechargeable Li-Ion, 860mA |
| Impedance | Input 15k Ω (1KHz) | Output 470 Ω (1KHz) |
| Audio Input Connector | Balanced XLR Male Input | |
| Audio Output Connector | | Balanced XLR Female Output |
| Maximum Input Level | Mic Mode: 2.8Vp-p Line Mode: 7Vp-p | |
| Maximum Output Level | | 2.8Vp-p |
| Gain Adjustment Range | Two Mode, Mic Is 0dB, Line Is -10dB | |
| Battery Life | Up To 5 Hours | Up To 5 Hours |
| Support Microphone Type | XLR Dynamic Microphone And Battery-powered Condenser Microphones. | |
| Antenna Impedance | 50 Ω | 50 Ω |
| Antenna Type | 1/4 Wave Sleeve Dipole, Non-removable | 1/4 Wave Sleeve Dipole, Non-removable |
| Number Of Antenna | 1 | 2 |

BATTERIES AND CHARGING



Connect Power



Connect to the socket

Note:

Turn off the power switch while charging.

Please do not use U3 when charging, which may reduce battery life.

CHARGING TIMES

BATTERY LIFE

0:15

30 min

0:30

1 hours

1:00

2 hours

2:30

5 hours

* Always store U3 at room temperature

* When storing the unit, please check the battery state regularly and charge if necessary.

2.4 GHz SPECTRUM OVERVIEW AND INTERFERENCE

U3 operates within the 2.4GHz ISM band which is utilized by Wi-Fi, Bluetooth, and other wireless devices. 2.4GHz is an open band and, as such, does not require a license to be used worldwide.

Tips and Methods to Improve Wireless System Performance

- 1) Keep more than 3 meters distance between Receiver unit and other WiFi transmitters such as routers.
- 2) Change channels to avoid interference with other WiFi products.
- 3) In case of environmental interference from other WiFi systems, shorten the distance between the receiver and transmitter units.

2.4Ghz Frequency Tables

| | |
|-----------|---------------------------|
| CHANNEL 1 | 2402MHz, 2480MHz, 2482MHz |
|-----------|---------------------------|

| | |
|-----------|---------------------------|
| CHANNEL 2 | 2408MHz, 2472MHz, 2474MHz |
|-----------|---------------------------|

| | |
|-----------|---------------------------|
| CHANNEL 3 | 2416MHz, 2464MHz, 2466MHz |
|-----------|---------------------------|

| | |
|-----------|---------------------------|
| CHANNEL 4 | 2434MHz, 2440MHz, 2442MHz |
|-----------|---------------------------|

| | |
|-----------|---------------------------|
| CHANNEL 5 | 2427MHz, 2448MHz, 2450MHz |
|-----------|---------------------------|

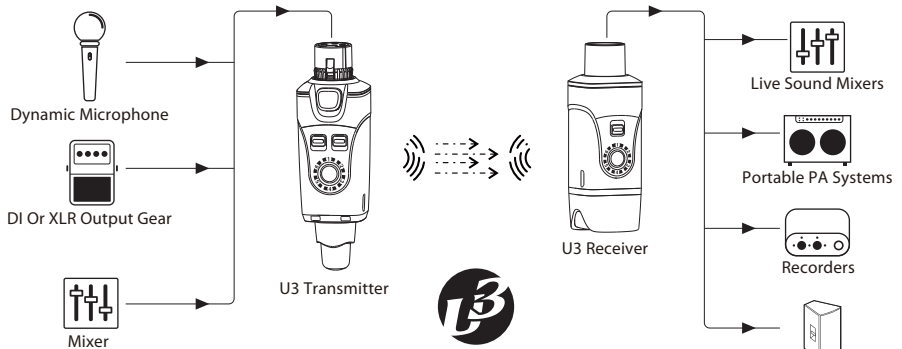
| | |
|-----------|---------------------------|
| CHANNEL 6 | 2422MHz, 2456MHz, 2458MHz |
|-----------|---------------------------|

* U2 1~4 channels are the same as U3/U3C 1~4 channels, U2 and U3/U3C use in sametime max is 6 sets.

TROUBLESHOOTING

| ISSUE | SOLUTION |
|--|---|
| No Sound | <ul style="list-style-type: none">• Check that the U3 Receiver's RF LED is lit.• Check that the microphone is turned on and receiving signal from the U3 Transmitter• Check that the power switch is turned on for both the Transmitter and the Receiver.• Ensure that the U3 Transmitter and Receiver are on the same channel.• The Receiver can be paired with one Transmitter at a time. |
| Distortion or Faint Sound | <ul style="list-style-type: none">• Adjust the gain mode to "Line" or "Mic"• Adjust the output signal from the transmitting device. |
| Signal instability: RF LED flickering, or off completely | <ul style="list-style-type: none">• See, "Tips and methods to improve wireless system performance" page 12 |
| Unable to switch the channel | <ul style="list-style-type: none">• The channel switch locks after 15 seconds. Double-click the channel button to unlock and reset. |
| Multiple connect | <ul style="list-style-type: none">• Use one transmitter can connect with more than 2 receivers. |

APPLICATION SCENE



U3 SET
DYNAMIC MICROPHONE
WIRELESS SYSTEM



China Patent Numbers ZL 2016 3 0165464.8

2nd floor, Building 12, Xicheng Industrial Area, Xixiang Town,
Baoan District, Shenzhen Guangdong China. 518101

E-mail: nancy@xviveaudio.com

www.xvive.com



MADE IN CHINA